

**HUXFORD BMH45PT LOW-ENERGY PASS-THROUGH/REAR-LOAD
3 DOOR COMMERCIAL DISPLAY FRIDGE**

INTERNAL OPERATING TEMPERATURE
0-4°C
Perishable Foods ✓
Drinks & Beverages ✓

OUTSIDE or AMBIENT OPERATING TEMPERATURE
Up to
40°C

MAXIMUM POSSIBLE WARRANTY YEARS*
5
or **2 YEARS STANDARD WARRANTY*** Excludes Corporates

PASS-THROUGH or REAR-LOAD

ENERGY CONSUMPTION
6.03 kWh/24hr¹
ELECTRICITY COST for 1 YEAR @ \$0.25c/kW
\$550.23¹
¹Sign box not included, Performed under test conditions

MEPS RATED
3M1, 4M1 & 5M1

LOW ENERGY / HIGH ENERGY EFFICIENCY

The **BMH45PT** Bottom Mount Huxford "Pass-Through" is a smart, eco-friendly, triple glass door display chiller that is one of the highest quality commercial refrigerators available in the market today. These units have an exclusive "Pass Through" or "Rear Loading" feature with rear self-closing doors allowing re-stocking from the back. The internal operating temperature is between 0-4°C so it will store and display dairy, meat, seafood, processed foods (all "potentially hazardous foods" as classified by most Australian Government Food Safety Standards & Authorities) as well as perishable foods, drinks and beverages. Unique "patented" airflow technology keeps the contents consistently chilled to temperature. Chosen by clients and corporates for its eco-friendly design with low energy consumption and power efficiency. Also featuring an intelligent Elstat EMS3000 smart controller which learns your trading times, automates energy savings, perishable and non-perishable mode. Complying with Australian (and NZ) Government MEPS (Minimum Energy Performance Standards) these units are rated 3M1, 4M1 & 5M1 and will save you on electricity costs. Featuring the universal Replaceable Refrigeration Package, interchangeable between all BMH/BMH-PT models which simply slides in and out and requires no tooling. Essential for any business that wants minimal down time in case of fridge failure, especially for perishable or potentially hazardous foods. These units are designed with durability in mind, for everyday heavy use. Suitable for up to 40°C ambient temperature.

BMH45PT Advantages

- | | | |
|--|--|---|
| <p>Warranty*</p> <ul style="list-style-type: none"> 5 Years Extendable Customer Care Warranty or 2 Year Standard Warranty (both Parts & Labour) <p>Smart Modes EMS</p> <ul style="list-style-type: none"> EMS (Energy Management System) learns your trading times & automates energy savings. Perishable and non-perishable modes | <p>Pass Through</p> <ul style="list-style-type: none"> Open unit from the rear doors to load stock from the back <p>Energy Efficiency</p> <ul style="list-style-type: none"> One of the lowest energy consumption fridges in the market <p>Airflow Technology</p> <ul style="list-style-type: none"> Patented airflow technology means faster cooling and temperature pull-down of product | <p>Compliance</p> <ul style="list-style-type: none"> MEPS 3M1, 4M1 & 5M1 <p>Servicing</p> <ul style="list-style-type: none"> Universal Removable Refrigeration Package (suits all BMH) slides out, no tools required. Long Lasting Steel Construction. Rodent Proof <p>Maintenance</p> <ul style="list-style-type: none"> Easy Clean Filter easy to remove – no tools required. |
|--|--|---|



**HUXFORD BMH45PT LOW-ENERGY PASS-THROUGH/REAR-LOAD
3 DOOR COMMERCIAL DISPLAY FRIDGE**

Features (shown in black)

	<p>Patented airflow technology delivering cold air evenly throughout the fridge, also means quick pull-down of warm/hot product</p>		<p>MEPS rated 3M1, 4M1 & 5M1 suitable for dairy, meat, seafood, juices, drinks/beverages and perishable foods (including all potentially hazardous foods)</p>	
	<p>Elstat EMS3000 smart controller. Learns your trading times, automates energy savings, perishable and non-perishable modes</p>		<p>"Pass Through" or "Rear Loading" model with rear self closing doors</p>	
	<p>Double glazed toughened safety glass with double heat reflective Low E & warm edge doors to reduce condensation</p>		<p>"Pass Through" or "Rear Loading" allowing re-stocking from the rear</p>	
	<p>Removable refrigeration package requires no tools to remove or replace, swaps with all BMH series models</p>		<p>High quality German EBM-EC fan motors are energy efficient and low noise</p>	
	<p>Custom sticker or decal on sides, kick panel or illuminated lightbox to draw attention and promote brand awareness</p>		<p>Bright full length internal Eco LED lights maximises product visibility for shopper attention</p>	
	<p>Blue coated evaporator protection provides corrosion resistance to acid wear from food</p>		<p>Fixed stainless steel trays on base of cabinet prevents spillage from food and beverages</p>	
	<p>Self closing doors with full length handles and deep accessible grips for easy customer opening</p>		<p>Plated steel shelf clips & PVC coated steel shelves prevent moisture corrosion</p>	
	<p>Removable 200mm high illuminated lightbox supplied standard</p>		<p>Twelve adjustable shelves supplied plus three fixed base trays</p>	

Features continue next page...

**HUXFORD BMH45PT LOW-ENERGY PASS-THROUGH/REAR-LOAD
3 DOOR COMMERCIAL DISPLAY FRIDGE
More Features**

	<p>Shelves are easily adjusted to various heights to accommodate different sized products</p>		<p>Designed to maximise the amount of vertical internal storage space available for merchandising</p>	
	<p>Removable dust filter which is easy to clean for preventative maintenance (no tools required). Easy to remove service cover - no tools required</p>		<p>Eight heavy duty smooth rolling castors. Front castors are lockable which prevents accidental movement</p>	
	<p>Optional Gravity Matting/Dividers with Uplighting also available</p>		<p>Internal power supply makes it easy to remove refrigeration package while fridge is full of product</p>	
	<p>Light switch included for internal lighting & lightbox. Easy to access under protected cover</p>		<p>Lockable tabs on top of all doors which are suitable for padlocks</p>	
	<p>Aluminium shelf level stripping with 12mm increments has numbered clip holes to make levelling or adjusting simple</p>			

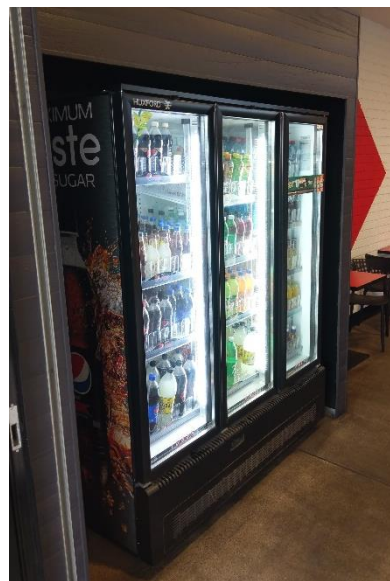
Colour Options & Optional Custom Decals



BMH45PT
In White



BMH45PT-B
In Black



BMH45PT-B
Optional Custom Decals & Gravity Matting (additional cost)

**HUXFORD BMH45PT LOW-ENERGY PASS-THROUGH/REAR-LOAD
3 DOOR COMMERCIAL DISPLAY FRIDGE**

Specifications



Model No	BMH45PT (White) & BMH45PT-B (Black)
External	
Size (mm) WidthxDepthxHeight	1660 x 745 x 2220mm
Doors	Self Closing Double Glazed Toughened Safety Glass with Double Heat Reflective Low E & Warm Edge
Exterior/Interior	Powder Coated Galvanised Steel - Colour Options: White or Black
Sign Box	Illuminated 200mm High Removable
Castors	8 Heavy Duty (4 front lockable)
Internal	
Capacity (Litres)	1384L
Size (mm) Width x Depth x Height	1530 x 612 x 1443mm
Temperature Range (°C)	0°C to 4°C - Tropicalised unit rated for 40°C ambient outside temperature
Suitable Foods & Drinks/Beverages	All Perishable, Drinks or Potentially Hazardous Foods Dairy (all, milk, custard, etc), Meat/Poultry (all, raw, cooked, foods containing meat, etc), Seafood (all, non-live), Processed Cut Fruits & Vegetables (all, fruit, vegetables, juices and salads), Cooked Rice & Pasta, Food/s containing Egg, Beans, Nuts or protein-rich foods, Food/s containing any of the above, Perishable Foods, Drinks and Beverages
Controller / Thermometer	Elstat EMS3000 Digital Display (learns and adapts to customer trading patterns to save you money)
Interior Lighting	LED Manual Control
Insulation	CFC free Cyclopentane
Shelving	12 Adjustable Heavy Duty PVC Coated Shelves 12mm Shelf Increments with Number Markings for Easy Location
Energy & Power	
MEPS Compliance	3M1, 4M1 & 5M1- High Efficiency
MEPS Efficiency (kWh/24hr/m²)	4.07
Energy Consumption* (kWh/24hr)	6.03
Power Required	220-240VAC/10Amp, Standard GPO (general power outlet)
Mechanical	
Service Package	Universal Removable Refrigeration Package interchangeable across all BMH Range
Compressor	Secop (Danfoss)
Refrigerant	R134a
Evaporator Treatment	Blue Coat Protection
Other Features	
Features	<ul style="list-style-type: none"> Patented Airflow Technology Design – Also means Quick Pull-Down Temperature of Product Easy to Access and Easy to Clean Filter at Front Bottom Internal Base Drip Tray per Door Lockable Tabs on Top of Doors Isolate Internal Power Supply to Remove Refrigeration Package While Full
Warranty*	
Warranty*	5 Year Extendable Customer Care Warranty or 2 Year Standard Warranty *Warranty Terms & Conditions apply

Huxford Refrigeration attempts to ensure the information is accurate and complete; however, this information may contain typographical errors, pricing errors and other inaccuracies. We assume no responsibility for such errors and omissions, and reserve the right to: (i) revoke any offer stated on the Web site; (ii) correct any errors, inaccuracies or omissions; and (iii) make changes to prices, content, promotions, product descriptions or specifications, or other information on the Web Site.